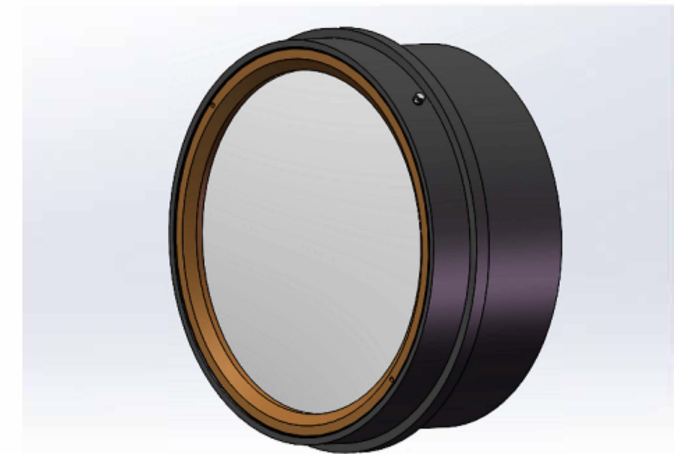


REVISIONS			
REV	DATE	DESCRIPTION	APO
01	20260129	standard lens-4"F3.3	
Specification			
Wavelength		633nm	
EFL		335.3mm	
F number		3.3	
Object Distance		$\infty$	
Field angle		$\pm 0.1^\circ$	
Wavefront error		PV<1 $\lambda$ @633nm	
Reference surface		PV<0.05 $\lambda$ @633nm	
Total length		54.6mm	



\*\* The information contained in this drawing is proprietary and confidential, and its ownership belongs to CPG Company. No part or all of the content may be copied in any way without the written permission of GeoPhotonics Technology Private Limited.

Tol: +/-0.1
Metal surface: Anodized black
Material: Al
Unit: mm
Magnification: 0.75

	Name	Date	4"F3.3 Lens	
Darwing				
Checking			NO:	
Standard Lens				