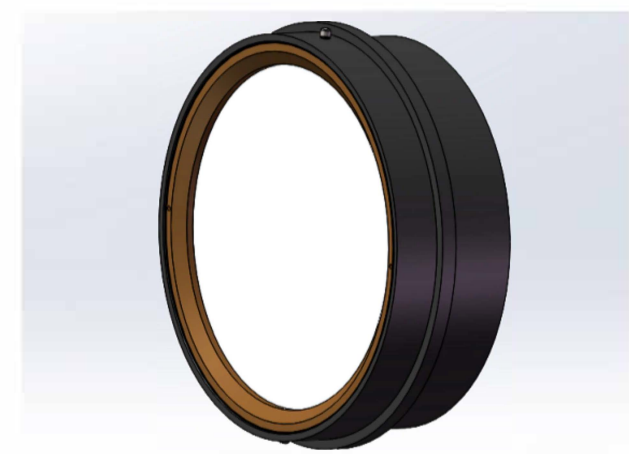
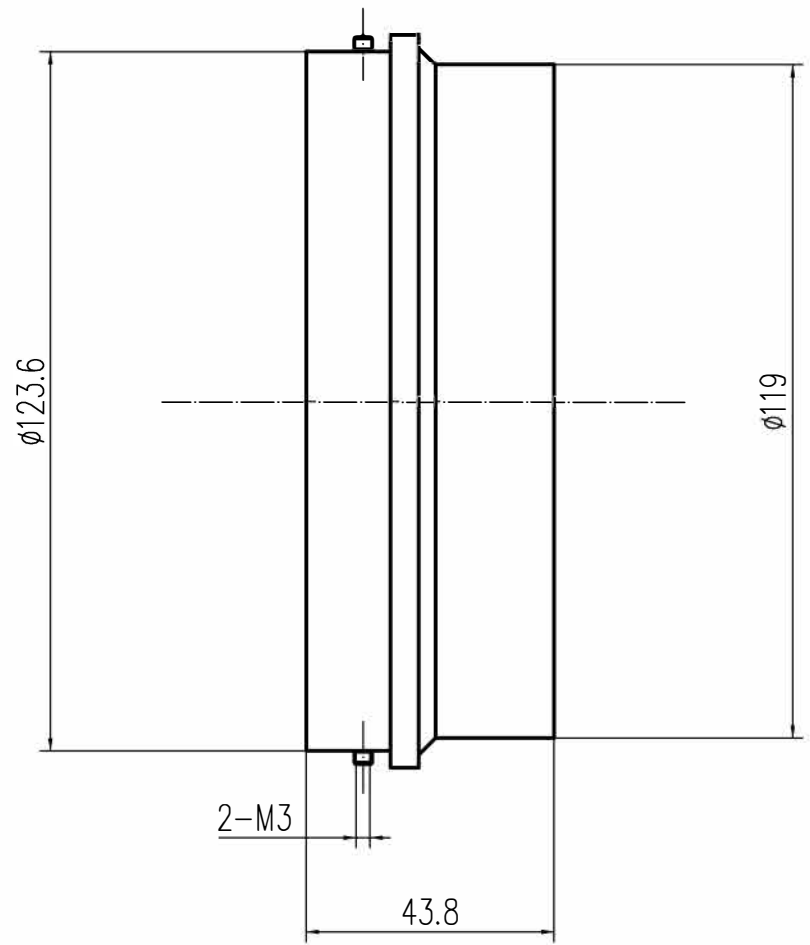


REVISIONS			
REV	DATE	DESCRIPTION	APO
01	20260205	standard lens-4''F16.5	
Specification			
Wavelength		633nm	
EFL		1676.4mm	
F-number		16.5	
Object Distance		$\infty$	
Field angle		$\pm 0.1^\circ$	
Wavefront error		PV<1 $\lambda$ @633nm	
Reference surface		PV<0.05 $\lambda$ @633nm	
Total length		43.8mm	



** The information contained in this drawing is proprietary and confidential, and its ownership belongs to CPG Company. No part or all of the content may be copied in any way without the written permission of GeoPhotonics Technology Private Limited.	Tol: +/-0.1		Name	Date	4''F16.5 Lens
	Metal surface: Anodized black	Darwing			
	Material: Al	Checking			
	Unit: mm	Standard Lens			NO:
	Magnification: 0.75				