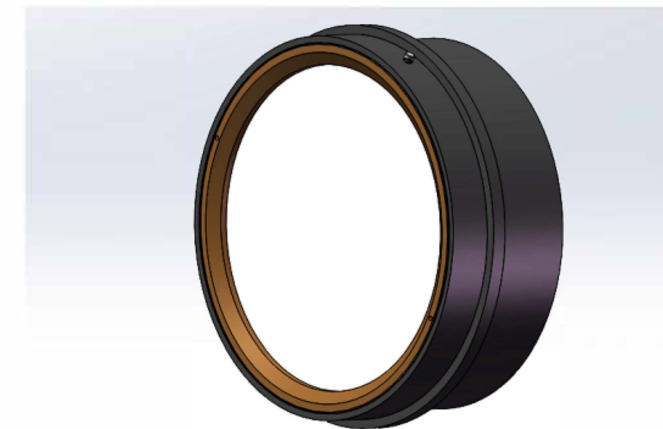


REVISIONS			
REV	DATE	DESCRIPTION	APO
01	20260211	standard lens-4''F10.7	
Specification			
Wavelength	633nm		
EFL	1086.7mm		
F-number	10.7		
Object Distance	$\infty$		
Field angle	$\pm 0.1^\circ$		
Wavefront error	PV<1 $\lambda$ @633nm		
Reference surface	PV<0.05 $\lambda$ @633nm		
Total length	49.8mm		



\*\* The information contained in this drawing is proprietary and confidential, and its ownership belongs to CPG Company. No part or all of the content may be copied in any way without the written permission of GeoPhotonics Technology Private Limited.

Tol: +/-0.1
Metal surface: Anodized black
Material: Al
Unit: mm
Magnification: 0.75

	Name	Date	4''F10.7 Lens
Darwing			
Checking			
Standard Lens			NO: